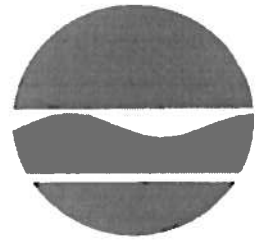


NEW YORK STATE DEPARTMENT OF ENVIRONMENTAL CONSERVATION
Division of Fish, Wildlife & Marine Resources
New York Natural Heritage Program
625 Broadway, 5th Floor, Albany, New York 12233-4757
Phone: (518) 402-8935 • **Fax:** (518) 402-8925
Website: www.dec.ny.gov



Joe Martens
Acting Commissioner

February 22, 2011

Todd J. Phillips
Barton & Loguidice
290 Elwood Davis Road, Bx 3107
Syracuse, NY 13220

RECEIVED
FEB 24 2011
BARTON & LOGUIDICE

Dear Mr. Phillips:

In response to your recent request, we have reviewed the New York Natural Heritage Program database with respect to an Environmental Assessment - Species List - for the proposed A T V Trail, Project 540.020 S, located in St. Lawrence County - no map included of Trail Boundaries.

Enclosed is a report of rare or state-listed animals and plants, significant natural Communities, and other significant habitats, which our databases indicate occur, or may occur, on your site or in the immediate vicinity of your site. For most sites, comprehensive field surveys have not been conducted; the enclosed report only includes records from our databases. We cannot provide a definitive statement as to the presence or absence of all rare or state-listed species or natural communities. This information should not be substituted for on-site surveys that may be required.

The enclosed report may be included in documents that will be available to the public. However, any enclosed maps displaying locations of rare species are considered sensitive information, and are intended only for the internal use of the recipient; they should not be included in any document that will be made available to the public, without permission from the New York Natural Heritage Program.

The presence of the plants and animals identified in the enclosed report may result in this project requiring additional review or permit conditions. For further guidance, and for information regarding other permits that may be required under state law for regulated areas or activities (e.g., regulated wetlands), please contact the appropriate NYS DEC Regional Office, Division of Environmental Permits, as listed at www.dec.ny.gov/about/39381.html.

Our databases are continually growing as records are added and updated. If this proposed project is still under development one year from now, we recommend that you contact us again so that we may update this response with the most current information.

Sincerely,

Tara Salerno, Information Services,
New York Natural Heritage Program

Enc.
cc: Region 6

157

I printed the list for St. Lawrence County. Anyone can now print these lists.

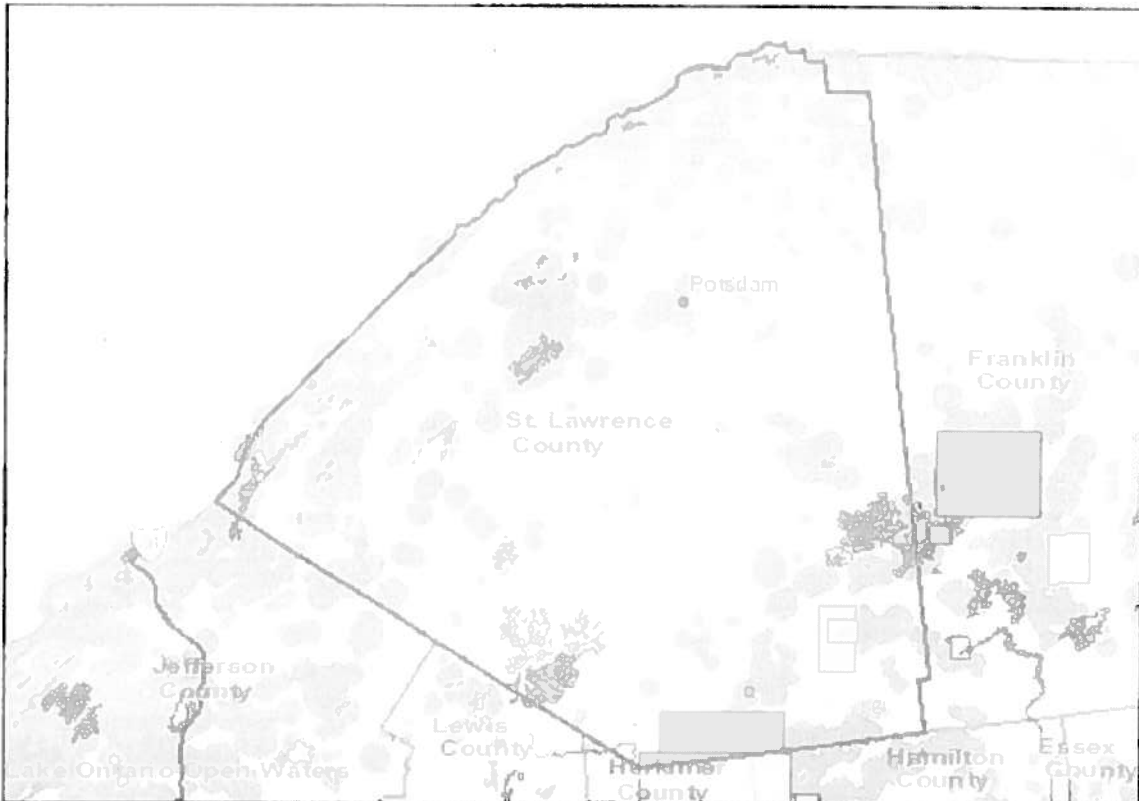
Species lists for broad areas can now be obtained from our new online tool called New York Nature Explorer <http://www.dec.ny.gov/natureexplorer/app>

Users may choose a county, town, or watershed, or may specify their own location on a map, and receive a list of the animals, plants, and natural communities that have been found there. Users may also choose a specific animal, plant, or natural community type, and get a list of the counties, towns, or watersheds where it has been found.

Included in Nature Explorer are the rare plants, rare animals, and significant natural communities (such as forests, wetlands, and other habitat types) documented by the Natural Heritage database; birds documented during the second NYS Breeding Bird Atlas from 2000 to 2005; and reptiles and amphibians documented during the NYS Herp Atlas from 1990 to 1999.

New York Nature Explorer County Results Report

Criteria: County: St. Lawrence



Common Name	Subgroup	Distribution Status	Year Last Documented	Protection Status		Conservation Rank	
				State	Federal	State	Global
County: St. Lawrence							

Animal: Mammals

Eastern Small-footed Myotis	Bats	Recently Confirmed	1986	Special Concern	S2	G3
<i>Myotis leibii</i>						

Animal: Birds

Alder Flycatcher	Flycatchers	Recently Confirmed	2000-2005	Protected Bird	S5	G5
<i>Empidonax alhorum</i>						
American Bittern	Herons, Bitterns, Egrets, Ibises	Recently Confirmed	2000-2005	Special Concern	S4	G4
<i>Botaurus lentiginosus</i>						

New York Nature Explorer

Common Name	Subgroup	Distribution Status	Year Last Documented	Protection Status		Conservation Rank	
				State	Federal	State	Global
American Black Duck <i>Anas rubripes</i>	Ducks, Geese, Waterfowl	Recently Confirmed	2000-2005	Protected Bird - Game with open season		S3B,SNRN	G5
American Coot <i>Fulica americana</i>	Rails, Coots and Cranes	Recently Confirmed	2000-2005	Protected Bird - Game with open season		S3	G5
American Crow <i>Corvus brachyrhynchos</i>	Crows and Jays	Recently Confirmed	2000-2005	Protected Bird - Game with open season		S5	G5
American Goldfinch <i>Carduelis tristis</i>	Finches and Crossbills	Recently Confirmed	2000-2005	Protected Bird		S5	G5
American Kestrel <i>Falco sparverius</i>	Hawks, Falcons, Eagles, Vultures	Recently Confirmed	2000-2005	Protected Bird		S5	G5
American Redstart <i>Setophaga ruticilla</i>	Wood-Warblers	Recently Confirmed	2000-2005	Protected Bird		S5	G5
American Robin <i>Turdus migratorius</i>	Thrushes and Bluebirds	Recently Confirmed	2000-2005	Protected Bird		S5	G5
American Wigeon <i>Anas americana</i>	Ducks, Geese, Waterfowl	Recently Confirmed	2000-2005	Protected Bird - Game with open season		S3	G5
American Woodcock <i>Scolopax minor</i>	Gulls, Terns, Plovers, Shorebirds	Recently Confirmed	2000-2005	Protected Bird - Game with open season		S5	G5
Bald Eagle <i>Haliaeetus leucocephalus</i>	Hawks, Falcons, Eagles, Vultures	Recently Confirmed	2009	Threatened		S2S3B,S2N	G5
Baltimore Oriole <i>Icterus galbula</i>	Blackbirds and Orioles	Recently Confirmed	2000-2005	Protected Bird		S5	G5
Bank Swallow <i>Riparia riparia</i>	Swallows	Recently Confirmed	2000-2005	Protected Bird		S5	G5
Barn Owl <i>Tyto alba</i>	Owls	Recently Confirmed		Protected Bird		S1S2	G5
Barn Swallow <i>Hirundo rustica</i>	Swallows	Recently Confirmed	2000-2005	Protected Bird		S5	G5
Barred Owl <i>Strix varia</i>	Owls	Recently Confirmed	2000-2005	Protected Bird		S5	G5

New York Nature Explorer

Common Name	Subgroup	Distribution Status	Year Last Documented	Protection Status		Conservation Rank	
				State	Federal	State	Global
Belted Kingfisher <i>Megasceryle alcyon</i>	Kingfishers	Recently Confirmed	2000-2005	Protected Bird		S5	G5
Black Tern <i>Chlidonias niger</i>	Gulls, Terns, Plovers, Shorebirds	Recently Confirmed	2007	Endangered		S2B	G4
Black-and-white Warbler <i>Mniotilta varia</i>	Wood-Warblers	Recently Confirmed	2000-2005	Protected Bird		S5	G5
Black-backed Woodpecker <i>Picoides arcticus</i>	Woodpeckers	Recently Confirmed	2000-2005	Protected Bird		S37	G5
Black-billed Cuckoo <i>Coccyzus erythrophthalmus</i>	Cuckoos	Recently Confirmed	2000-2005	Protected Bird		S5	G5
Black-capped Chickadee <i>Parus atricapillus</i>	Chickadees and Titmice	Recently Confirmed	2000-2005	Protected Bird		S5	G5
Black-crowned Night-Heron <i>Nycticorax nycticorax</i>	Hérons, Bitterns, Egrets, ibises	Recently Confirmed	2000-2005	Protected Bird		S3	G5
Black-throated Blue Warbler <i>Dendroica caerulescens</i>	Wood-Warblers	Recently Confirmed	2000-2005	Protected Bird		S5	G5
Black-throated Green Warbler <i>Dendroica virens</i>	Wood-Warblers	Recently Confirmed	2000-2005	Protected Bird		S5	G5
Blackburnian Warbler <i>Dendroica fusca</i>	Wood-Warblers	Recently Confirmed	2000-2005	Protected Bird		S5	G5
Blue Jay <i>Cyanocitta cristata</i>	Crows and Jays	Recently Confirmed	2000-2005	Protected Bird		S5	G5
Blue-gray Gnatcatcher <i>Poliophtila caerulea</i>	Gnatcatchers	Recently Confirmed	2000-2005	Protected Bird		S5	G5
Blue-headed Vireo <i>Vireo solitarius</i>	Vireos	Recently Confirmed	2000-2005	Protected Bird		S5	G5
Blue-winged Teal <i>Anas discors</i>	Ducks, Geese, Waterfowl	Recently Confirmed	2000-2005	Protected Bird - Game with open season		S2S3B	G5
Blue-winged Warbler <i>Vermivora pinus</i>	Wood-Warblers	Recently Confirmed	2000-2005	Protected Bird		S5	G5
Bobolink <i>Dolichonyx oryzivorus</i>	Blackbirds and Orioles	Recently Confirmed	2000-2005	Protected Bird		S5	G5

New York Nature Explorer

Common Name	Subgroup	Distribution Status	Year Last Documented	Protection Status		Conservation Rank	
				State	Federal	State	Global
Boreal Chickadee <i>Pocile hudsonica</i>	Chickadees and Titmice	Recently Confirmed	2000-2005	Protected Bird		S3	G5
Brewster's Warbler <i>Vermivora pinus x chrysoptera</i>	Wood-Warblers	Recently Confirmed	2000-2005	Protected Bird		SNA	GNA
Broad-winged Hawk <i>Buteo platypterus</i>	Hawks, Falcons, Eagles, Vultures	Recently Confirmed	2000-2005	Protected Bird		S5	G5
Brown Creeper <i>Certhia americana</i>	Creepers	Recently Confirmed	2000-2005	Protected Bird		S5	G5
Brown Thrasher <i>Toxostoma rufum</i>	Mockingbirds and Thrashers	Recently Confirmed	2000-2005	Protected Bird		S3S4	G5
Brown-headed Cowbird <i>Molothrus ater</i>	Blackbirds and Orioles	Recently Confirmed	2000-2005	Protected Bird		S5	G5
Canada Goose <i>Branta canadensis</i>	Ducks, Geese, Waterfowl	Recently Confirmed	2000-2005	Protected Bird - Game with open season		S5	G5
Canada Warbler <i>Wilsonia canadensis</i>	Wood-Warblers	Recently Confirmed	2000-2005	Protected Bird		S5	G5
Carolina Wren <i>Thryothorus ludovicianus</i>	Wrens	Recently Confirmed	2000-2005	Protected Bird		S5	G5
Cedar Waxwing <i>Bombycilla cedrorum</i>	Waxwings	Recently Confirmed	2000-2005	Protected Bird		S5	G5
Cerulean Warbler <i>Dendroica cerulea</i>	Wood-Warblers	Recently Confirmed	2000-2005	Special Concern		S3?	G4
Chestnut-sided Warbler <i>Dendroica pensylvanica</i>	Wood-Warblers	Recently Confirmed	2000-2005	Protected Bird		S5	G5
Chimney Swift <i>Chaetura pelagica</i>	Hummingbirds and Swifts	Recently Confirmed	2000-2005	Protected Bird		S5	G5
Chipping Sparrow <i>Spizella passerina</i>	Sparrows and Towhees	Recently Confirmed	2000-2005	Protected Bird		S5	G5
Cliff Swallow <i>Petrochelidon pyrrhonota</i>	Swallows	Recently Confirmed	2000-2005	Protected Bird		S5	G5
Common Grackle <i>Quiscalus quiscula</i>	Blackbirds and Orioles	Recently Confirmed	2000-2005	Protected Bird		S5	G5

New York Nature Explorer

Common Name	Subgroup	Distribution Status	Year Last Documented	Protection Status		Conservation Rank	
				State	Federal	State	Global
Common Loon <i>Gavia immer</i>	Loons	Recently Confirmed	2009	Special Concern		S4	G5
Common Merganser <i>Mergus merganser</i>	Ducks, Geese, Waterfowl	Recently Confirmed	2000-2005	Protected Bird - Game with open season		S5	G5
Common Moorhen <i>Gallinula chloropus</i>	Rails, Coots and Cranes	Recently Confirmed	2000-2005	Protected Bird - Game with open season		S3S4	G5
Common Nighthawk <i>Chordeiles minor</i>	Nightbirds	Recently Confirmed	2000-2005	Special Concern		S2S3	G5
Common Raven <i>Corvus corax</i>	Crows and Jays	Recently Confirmed	2000-2005	Protected Bird		S4	G5
Common Tern <i>Sterna hirundo</i>	Gulls, Terns, Plovers, Shorebirds	Recently Confirmed	2000-2005	Threatened		S3B	G5
Common Yellowthroat <i>Geothlypis trichas</i>	Wood-Warblers	Recently Confirmed	2000-2005	Protected Bird		S5	G5
Cooper's Hawk <i>Accipiter cooperii</i>	Hawks, Falcons, Eagles, Vultures	Recently Confirmed	2000-2005	Special Concern		S4	G5
Dark-eyed Junco <i>Junco hyemalis</i>	Sparrows and Towhees	Recently Confirmed	2000-2005	Protected Bird		S5	G5
Double-crested Cormorant <i>Phalacrocorax auritus</i>	Pelicans and Cormorants	Recently Confirmed	2000-2005	Protected Bird		S3	G5
Downy Woodpecker <i>Picoides pubescens</i>	Woodpeckers	Recently Confirmed	2000-2005	Protected Bird		S5	G5
Eastern Bluebird <i>Sialia sialis</i>	Thrushes and Bluebirds	Recently Confirmed	2000-2005	Protected Bird		S5	G5
Eastern Kingbird <i>Tyrannus tyrannus</i>	Flycatchers	Recently Confirmed	2000-2005	Protected Bird		S5	G5
Eastern Meadowlark <i>Sturnella magna</i>	Blackbirds and Orioles	Recently Confirmed	2000-2005	Protected Bird		S5	G5
Eastern Phoebe <i>Sayornis phoebe</i>	Flycatchers	Recently Confirmed	2000-2005	Protected Bird		S5	G5
Eastern Screech-Owl <i>Megascops asio</i>	Owls	Recently Confirmed	2000-2005	Protected Bird		S5	G5

New York Nature Explorer

Common Name	Subgroup	Distribution Status	Year Last Documented	Protection Status		Conservation Rank	
				State	Federal	State	Global
Eastern Towhee <i>Pipilo erythrophthalmus</i>	Sparrows and Towhees	Recently Confirmed	2000-2005	Protected Bird		S5	G5
Eastern Wood-Pewee <i>Contopus virens</i>	Flycatchers	Recently Confirmed	2000-2005	Protected Bird		S5	G5
European Starling <i>Sturnus vulgaris</i>	Starlings	Recently Confirmed	2000-2005			SNA	G5
Evening Grosbeak <i>Coccothraustes vespertinus</i>	Finches and Crossbills	Recently Confirmed	2000-2005	Protected Bird		S5	G5
Field Sparrow <i>Spizella pusilla</i>	Sparrows and Towhees	Recently Confirmed	2000-2005	Protected Bird		S5	G5
Gadwall <i>Anas strepera</i>	Ducks, Geese, Waterfowl	Recently Confirmed	2000-2005	Protected Bird - Game with open season		S3	G5
Golden Eagle <i>Aquila chrysaetos</i>	Hawks, Falcons, Eagles, Vultures	Historically Confirmed	1960	Endangered		SHB,S1N	G5
Golden-crowned Kinglet <i>Regulus satrapa</i>	Kinglets	Recently Confirmed	2000-2005	Protected Bird		S5	G5
Golden-winged Warbler <i>Vermivora chrysoptera</i>	Wood-Warblers	Recently Confirmed	2000-2005	Special Concern		S3	G4
Grasshopper Sparrow <i>Ammodramus savannarum</i>	Sparrows and Towhees	Recently Confirmed	2000-2005	Special Concern		S3	G5
Gray Catbird <i>Dumetella carolinensis</i>	Mockingbirds and Thrashers	Recently Confirmed	2000-2005	Protected Bird		S5	G5
Gray Jay <i>Perisoreus canadensis</i>	Crows and Jays	Recently Confirmed	2000-2005	Protected Bird		S3	G5
Great Black-backed Gull <i>Larus marinus</i>	Gulls, Terns, Plovers, Shorebirds	Recently Confirmed	2000-2005	Protected Bird		S4	G5
Great Blue Heron <i>Ardea herodias</i>	Hérons, Bitterns, Egrets, Ibises	Recently Confirmed	2000-2005	Protected Bird		S5	G5
Great Crested Flycatcher <i>Myiarchus crinitus</i>	Flycatchers	Recently Confirmed	2000-2005	Protected Bird		S5	G5
Great Horned Owl <i>Bubo virginianus</i>	Owls	Recently Confirmed	2000-2005	Protected Bird		S5	G5

New York Nature Explorer

Common Name	Subgroup	Distribution Status	Year Last Documented	Protection Status		Conservation Rank	
				State	Federal	State	Global
Green Heron <i>Butorides virescens</i>	Hérons, Bitterns, Egrets, Ibisés	Recently Confirmed	2000-2005	Protected Bird		S5	G5
Green-winged Teal <i>Anas crecca</i>	Ducks, Geese, Waterfowl	Recently Confirmed	2000-2005	Protected Bird - Game with open season		S3	G5
Hairy Woodpecker <i>Picoides villosus</i>	Woodpeckers	Recently Confirmed	2000-2005	Protected Bird		S5	G5
Henslow's Sparrow <i>Ammodramus henslowii</i>	Sparrows and Towhees	Recently Confirmed	2000-2005	Threatened		S3B	G4
Hermit Thrush <i>Catharus guttatus</i>	Thrushes and Bluebirds	Recently Confirmed	2000-2005	Protected Bird		S5	G5
Herring Gull <i>Larus argentatus</i>	Gulls, Terns, Plovers, Shorebirds	Recently Confirmed	2000-2005	Protected Bird		S5	G5
Hooded Merganser <i>Lophodytes cucullatus</i>	Ducks, Geese, Waterfowl	Recently Confirmed	2000-2005	Protected Bird - Game with open season		S4	G5
Horned Lark <i>Eremophila alpestris</i>	Larks	Recently Confirmed	2000-2005	Special Concern		S3S4	G5
House Finch <i>Carpodacus mexicanus</i>	Finches and Crossbills	Recently Confirmed	2000-2005	Protected Bird		SNA	G5
House Sparrow <i>Passer domesticus</i>	Old World Sparrows	Recently Confirmed	2000-2005			SNA	G5
House Wren <i>Troglodytes aedon</i>	Wrens	Recently Confirmed	2000-2005	Protected Bird		S5	G5
Indigo Bunting <i>Passerina cyanea</i>	Cardinals and Buntings	Recently Confirmed	2000-2005	Protected Bird		S5	G5
Killdeer <i>Charadrius vociferus</i>	Gulls, Terns, Plovers, Shorebirds	Recently Confirmed	2000-2005	Protected Bird		S5	G5
Lawrence's Warbler <i>Vermivora chrysoptera x pinus</i>	Wood-Warblers	Recently Confirmed	2000-2005	Protected Bird		SNA	GNA
Least Bittern <i>Ixobrychus exilis</i>	Hérons, Bitterns, Egrets, Ibisés	Recently Confirmed	2007	Threatened		S3B,S1N	G5
Least Flycatcher <i>Empidonax minimus</i>	Flycatchers	Recently Confirmed	2000-2005	Protected Bird		S5	G5

New York Nature Explorer

Common Name	Subgroup	Distribution Status	Year Last Documented	Protection Status		Conservation Rank	
				State	Federal	State	Global
Lincoln's Sparrow <i>Melospiza lincolni</i>	Sparrows and Towhees	Recently Confirmed	2000-2005	Protected Bird		S4	G5
Loggerhead Shrike <i>Lanius ludovicianus</i>	Shrikes	Recently Confirmed	1983	Endangered		S1B	G4
Long-eared Owl <i>Asio otus</i>	Owls	Recently Confirmed	2000-2005	Protected Bird		S2S3B,SN RN	G5
Louisiana Waterthrush <i>Sciurus motacilla</i>	Wood-Warblers	Recently Confirmed	2000-2005	Protected Bird		S5	G5
Magnolia Warbler <i>Dendroica magnolia</i>	Wood-Warblers	Recently Confirmed	2000-2005	Protected Bird		S5	G5
Mallard <i>Anas platyrhynchos</i>	Ducks, Geese, Waterfowl	Recently Confirmed	2000-2005	Protected Bird - Game with open season		S5	G5
Mallard x Am. Black Duck Hybrid <i>Anas platyrhynchos x rubripes</i>	Ducks, Geese, Waterfowl	Recently Confirmed	2000-2005	Protected Bird - Game with open season		SNA	GNA
Marsh Wren <i>Cistothorus palustris</i>	Wrens	Recently Confirmed	2000-2005	Protected Bird		S5	G5
Merlin <i>Falco columbarius</i>	Hawks, Falcons, Eagles, Vultures	Recently Confirmed	2000-2005	Protected Bird		S3?	G5
Mourning Dove <i>Zenaida macroura</i>	Pigeons and Doves	Recently Confirmed	2000-2005	Protected Bird		S5	G5
Mourning Warbler <i>Oporornis philadelphia</i>	Wood-Warblers	Recently Confirmed	2000-2005	Protected Bird		S5	G5
Mute Swan <i>Cygnus olor</i>	Ducks, Geese, Waterfowl	Recently Confirmed	2000-2005	Protected Bird		SNA	G5
Nashville Warbler <i>Vermivora ruficapilla</i>	Wood-Warblers	Recently Confirmed	2000-2005	Protected Bird		S5	G5
Northern Cardinal <i>Cardinalis cardinalis</i>	Cardinals and Buntings	Recently Confirmed	2000-2005	Protected Bird		S5	G5
Northern Flicker <i>Colaptes auratus</i>	Woodpeckers	Recently Confirmed	2000-2005	Protected Bird		S5	G5
Northern Goshawk <i>Accipiter gentilis</i>	Hawks, Falcons, Eagles, Vultures	Recently Confirmed	2000-2005	Special Concern		S3S4B,S3N	G5

New York Nature Explorer

Common Name	Subgroup	Distribution Status	Year Last Documented	Protection Status		Conservation Rank	
				State	Federal	State	Global
Northern Harrier <i>Circus cyaneus</i>	Hawks, Falcons, Eagles, Vultures	Recently Confirmed	2003	Threatened		S3B,S3N	G5
Northern Mockingbird <i>Mimus polyglottos</i>	Mockingbirds and Thrashers	Recently Confirmed	2000-2005	Protected Bird		S5	G5
Northern Parula <i>Parula americana</i>	Wood-Warblers	Recently Confirmed	2000-2005	Protected Bird		S3S4	G5
Northern Rough-winged Swallow <i>Stelgidopteryx serripennis</i>	Swallows	Recently Confirmed	2000-2005	Protected Bird		S5	G5
Northern Saw-whet Owl <i>Aegolius acadicus</i>	Owls	Recently Confirmed	2000-2005	Protected Bird		S3	G5
Northern Shoveler <i>Anas clypeata</i>	Ducks, Geese, Waterfowl	Recently Confirmed	2000-2005	Protected Bird - Game with open season		S2	G5
Northern Waterthrush <i>Seiurus noveboracensis</i>	Wood-Warblers	Recently Confirmed	2000-2005	Protected Bird		S5	G5
Olive-sided Flycatcher <i>Contopus cooperi</i>	Flycatchers	Recently Confirmed	2000-2005	Protected Bird		S3	G4
Osprey <i>Pandion haliaetus</i>	Hawks, Falcons, Eagles, Vultures	Recently Confirmed	2000-2005	Special Concern		S4B	G5
Ovenbird <i>Seiurus aurocapilla</i>	Wood-Warblers	Recently Confirmed	2000-2005	Protected Bird		S5	G5
Palm Warbler <i>Dendroica palmarum</i>	Wood-Warblers	Recently Confirmed	2000-2005	Protected Bird		S2S3	G5
Peregrine Falcon <i>Falco peregrinus</i>	Hawks, Falcons, Eagles, Vultures	Recently Confirmed	2009	Endangered		S3B	G4
Philadelphia Vireo <i>Vireo philadelphicus</i>	Vireos	Recently Confirmed	2000-2005	Protected Bird		S3	G5
Pied-billed Grebe <i>Podilymbus podiceps</i>	Grebes	Recently Confirmed	2010	Threatened		S3B,S1N	G5
Pileated Woodpecker <i>Dryocopus pileatus</i>	Woodpeckers	Recently Confirmed	2000-2005	Protected Bird		S5	G5
Pine Siskin <i>Carduelis pinus</i>	Finches and Crossbills	Recently Confirmed	2000-2005	Protected Bird		S5	G5

New York Nature Explorer

Common Name	Subgroup	Distribution Status	Year Last Documented	Protection Status		Conservation Rank	
				State	Federal	State	Global
Pine Warbler <i>Dendroica pinus</i>	Wood-Warblers	Recently Confirmed	2000-2005	Protected Bird		S5	G5
Prairie Warbler <i>Dendroica discolor</i>	Wood-Warblers	Recently Confirmed	2000-2005	Protected Bird		S5	G5
Purple Finch <i>Carpodacus purpureus</i>	Finches and Crossbills	Recently Confirmed	2000-2005	Protected Bird		S5	G5
Purple Martin <i>Progne subis</i>	Swallows	Recently Confirmed	2000-2005	Protected Bird		S4	G5
Red Crossbill <i>Loxia curvirostra</i>	Finches and Crossbills	Recently Confirmed	2000-2005	Protected Bird		S2S3	G5
Red-bellied Woodpecker <i>Melanerpes carolinus</i>	Woodpeckers	Recently Confirmed	2000-2005	Protected Bird		S5	G5
Red-breasted Merganser <i>Mergus serrator</i>	Ducks, Geese, Waterfowl	Recently Confirmed	2000-2005	Protected Bird - Game with open season		S3	G5
Red-breasted Nuthatch <i>Sitta canadensis</i>	Nuthatches	Recently Confirmed	2000-2005	Protected Bird		S5	G5
Red-eyed Vireo <i>Vireo olivaceus</i>	Vireos	Recently Confirmed	2000-2005	Protected Bird		S5	G5
Red-headed Woodpecker <i>Melanerpes erythrocephalus</i>	Woodpeckers	Recently Confirmed	2000-2005	Special Concern		S2?	G5
Red-shouldered Hawk <i>Buteo lineatus</i>	Hawks, Falcons, Eagles, Vultures	Recently Confirmed	2000-2005	Special Concern		S4B	G5
Red-tailed Hawk <i>Buteo jamaicensis</i>	Hawks, Falcons, Eagles, Vultures	Recently Confirmed	2000-2005	Protected Bird		S5	G5
Red-winged Blackbird <i>Agelaius phoeniceus</i>	Blackbirds and Orioles	Recently Confirmed	2000-2005	Protected Bird		S5	G5
Redhead <i>Aythya americana</i>	Ducks, Geese, Waterfowl	Recently Confirmed	2000-2005	Protected Bird - Game with open season		S2,SNRN	G5
Ring-billed Gull <i>Larus delawarensis</i>	Gulls, Terns, Plovers, Shorebirds	Recently Confirmed	2000-2005	Protected Bird		S4	G5
Ring-necked Duck <i>Aythya collaris</i>	Ducks, Geese, Waterfowl	Recently Confirmed	2000-2005	Protected Bird - Game with open season		S3	G5

New York Nature Explorer

Common Name	Subgroup	Distribution Status	Year Last Documented	Protection Status		Conservation Rank	
				State	Federal	State	Global
Ring-necked Pheasant <i>Phasianus colchicus</i>	Grouse, Pheasants, Turkeys	Recently Confirmed	2000-2005	Protected Bird - Game with open season		SNA	G5
Rock Pigeon <i>Columba livia</i>	Pigeons and Doves	Recently Confirmed	2000-2005			SNA	G5
Rose-breasted Grosbeak <i>Phoebastria ludovicianus</i>	Cardinals and Buntings	Recently Confirmed	2000-2005	Protected Bird		S5	G5
Ruby-crowned Kinglet <i>Regulus calendula</i>	Kinglets	Recently Confirmed	2000-2005	Protected Bird		S3	G5
Ruby-throated Hummingbird <i>Archilochus colubris</i>	Hummingbirds and Swifts	Recently Confirmed	2000-2005	Protected Bird		S5	G5
Ruddy Duck <i>Oxyura jamaicensis</i>	Ducks, Geese, Waterfowl	Recently Confirmed	2000-2005	Protected Bird - Game with open season		S1	G5
Ruffed Grouse <i>Bonasa umbellus</i>	Grouse, Pheasants, Turkeys	Recently Confirmed	2000-2005	Protected Bird - Game with open season		S5	G5
Rusty Blackbird <i>Euphagus carolinus</i>	Blackbirds and Orioles	Recently Confirmed	2000-2005	Protected Bird		S2	G4
Savannah Sparrow <i>Passerculus sandwichensis</i>	Sparrows and Towhees	Recently Confirmed	2000-2005	Protected Bird		S5	G5
Scarlet Tanager <i>Piranga olivacea</i>	Cardinals and Buntings	Recently Confirmed	2000-2005	Protected Bird		S5	G5
Sedge Wren <i>Cistothorus platensis</i>	Wrens	Recently Confirmed	2001	Threatened		S3B	G5
Sharp-shinned Hawk <i>Accipiter striatus</i>	Hawks, Falcons, Eagles, Vultures	Recently Confirmed	2000-2005	Special Concern		S4	G5
Short-eared Owl <i>Asio flammeus</i>	Owls	Recently Confirmed	2000	Endangered		S2	G5
Song Sparrow <i>Melospiza melodia</i>	Sparrows and Towhees	Recently Confirmed	2000-2005	Protected Bird		S5	G5
Sora <i>Porzana carolina</i>	Rails, Coots and Cranes	Recently Confirmed	2000-2005	Protected Bird - Game with open season		S4	G5

New York Nature Explorer

Common Name	Subgroup	Distribution Status	Year Last Documented	Protection Status		Conservation Rank	
				State	Federal	State	Global
Spotted Sandpiper <i>Actitis macularius</i>	Gulls, Terns, Plovers, Shorebirds	Recently Confirmed	2000-2005	Protected Bird		S5	G5
Spruce Grouse <i>Falcapennis canadensis</i>	Grouse, Pheasants, Turkeys	Recently Confirmed	2004	Endangered		S2	G5
Swainson's Thrush <i>Catharus ustulatus</i>	Thrushes and Bluebirds	Recently Confirmed	2000-2005	Protected Bird		S5	G5
Swamp Sparrow <i>Melospiza georgiana</i>	Sparrows and Towhees	Recently Confirmed	2000-2005	Protected Bird		S5	G5
Tennessee Warbler <i>Vermivora peregrina</i>	Wood-Warblers	Recently Confirmed	2000-2005	Protected Bird		S2	G5
Tree Swallow <i>Tachycineta bicolor</i>	Swallows	Recently Confirmed	2000-2005	Protected Bird		S5	G5
Trumpeter Swan <i>Cygnus buccinator</i>	Ducks, Geese, Waterfowl	Recently Confirmed	2000-2005	Protected Bird		S1	G4
Tufted Titmouse <i>Baeolophus bicolor</i>	Chickadees and Titmice	Recently Confirmed	2000-2005	Protected Bird		S5	G5
Turkey Vulture <i>Cathartes aura</i>	Hawks, Falcons, Eagles, Vultures	Recently Confirmed	2000-2005	Protected Bird		S4	G5
Upland Sandpiper <i>Bartramia longicauda</i>	Gulls, Terns, Plovers, Shorebirds	Recently Confirmed	2004	Threatened		S3B	G5
Veery <i>Catharus fuscescens</i>	Thrushes and Bluebirds	Recently Confirmed	2000-2005	Protected Bird		S5	G5
Vesper Sparrow <i>Pooecetes gramineus</i>	Sparrows and Towhees	Recently Confirmed	2000-2005	Special Concern		S3	G5
Virginia Rail <i>Rallus limicola</i>	Rails, Coots and Cranes	Recently Confirmed	2000-2005	Protected Bird - Game with open season		S5	G5
Warbling Vireo <i>Vireo gilvus</i>	Vireos	Recently Confirmed	2000-2005	Protected Bird		S5	G5
Whip-poor-will <i>Caprimulgus vociferus</i>	Nightbirds	Recently Confirmed	2000-2005	Special Concern		S3	G5
White-breasted Nuthatch <i>Sitta carolinensis</i>	Nuthatches	Recently Confirmed	2000-2005	Protected Bird		S5	G5

New York Nature Explorer

Common Name	Subgroup	Distribution Status	Year Last Documented	Protection Status		Conservation Rank	
				State	Federal	State	Global
White-throated Sparrow <i>Zonotrichia albicollis</i>	Sparrows and Towhees	Recently Confirmed	2000-2005	Protected Bird		S5	G5
White-winged Crossbill <i>Loxia leucoptera</i>	Finches and Crossbills	Recently Confirmed	2000-2005	Protected Bird		S2S3	G5
Wild Turkey <i>Meleagris gallopavo</i>	Grouse, Pheasants, Turkeys	Recently Confirmed	2000-2005	Protected Bird - Game with open season		S5	G5
Willow Flycatcher <i>Empidonax traillii</i>	Flycatchers	Recently Confirmed	2000-2005	Protected Bird		S5	G5
Wilson's Snipe <i>Gallinago delicata</i>	Gulls, Terns, Plovers, Shorebirds	Recently Confirmed	2000-2005	Protected Bird - Game with open season		S5	G5
Winter Wren <i>Troglodytes troglodytes</i>	Wrens	Recently Confirmed	2000-2005	Protected Bird		S5	G5
Wood Duck <i>Aix sponsa</i>	Ducks, Geese, Waterfowl	Recently Confirmed	2000-2005	Protected Bird - Game with open season		S5	G5
Wood Thrush <i>Hylocichla mustelina</i>	Thrushes and Bluebirds	Recently Confirmed	2000-2005	Protected Bird		S5	G5
Yellow Warbler <i>Dendroica petechia</i>	Wood-Warblers	Recently Confirmed	2000-2005	Protected Bird		S5	G5
Yellow-bellied Flycatcher <i>Empidonax flaviventris</i>	Flycatchers	Recently Confirmed	2000-2005	Protected Bird		S3	G5
Yellow-bellied Sapsucker <i>Sphyrapicus varius</i>	Woodpeckers	Recently Confirmed	2000-2005	Protected Bird		S5	G5
Yellow-billed Cuckoo <i>Coccyzus americanus</i>	Cuckoos	Recently Confirmed	2000-2005	Protected Bird		S5	G5
Yellow-rumped Warbler <i>Dendroica coronata</i>	Wood-Warblers	Recently Confirmed	2000-2005	Protected Bird		S5	G5
Yellow-throated Vireo <i>Vireo flavifrons</i>	Vireos	Recently Confirmed	2000-2005	Protected Bird		S5	G5

Animal: Reptiles

Blanding's Turtle <i>Emydoidea blandingii</i>	Turtles	Recently Confirmed	2010	Threatened		S2S3	G4
--	---------	--------------------	------	------------	--	------	----

New York Nature Explorer

Common Name	Subgroup	Distribution Status	Year Last Documented	Protection Status		Conservation Rank	
				State	Federal	State	Global
Common Gartersnake <i>Thamnophis sirtalis</i>	Snakes	Recently Confirmed	1990-1999	Game with no open season		S5	G5
Common Map Turtle <i>Graptemys geographica</i>	Turtles	Recently Confirmed	1990-1999	Game with no open season		S3	G5
Common Musk Turtle <i>Sternotherus odoratus</i>	Turtles	Recently Confirmed	1990-1999	Game with no open season		S5	G5
DeKay's Brownsnake <i>Storeria dckayi</i>	Snakes	Recently Confirmed	1990-1999	Game with no open season		S5	G5
Eastern Ratsnake <i>Elaphe obsoleta</i>	Snakes	Recently Confirmed	1990-1999	Game with no open season		S4	G5
Eastern Ribbonsnake <i>Thamnophis sauritus</i>	Snakes	Recently Confirmed	1990-1999	Game with no open season		S4	G5
Milksnake <i>Lampropeltis triangulum</i>	Snakes	Recently Confirmed	1990-1999	Game with no open season		S5	G5
Northern Watersnake <i>Nerodia sipedon</i>	Snakes	Recently Confirmed	1990-1999	Game with no open season		S5	G5
Painted Turtle <i>Chrysemys picta</i>	Turtles	Recently Confirmed	1990-1999	Game with no open season		S5	G5
Red-bellied Snake <i>Storeria occipitomaculata</i>	Snakes	Recently Confirmed	1990-1999	Game with no open season		S5	G5
Ring-necked Snake <i>Diadophis punctatus</i>	Snakes	Recently Confirmed	1990-1999	Game with no open season		S5	G5
Smooth Green Snake <i>Liochlorophis vernalis</i>	Snakes	Recently Confirmed	1990-1999	Game with no open season		S4	G5
Snapping Turtle <i>Chelydra serpentina</i>	Turtles	Recently Confirmed	1990-1999	Game with open season		S5	G5
Spotted Turtle <i>Clemmys guttata</i>	Turtles	Recently Confirmed	1990-1999	Special Concern		S3	G5
Wood Turtle <i>Glyptemys insculpta</i>	Turtles	Recently Confirmed	1990-1999	Special Concern		S3	G4

Animal: Amphibians

New York Nature Explorer

Common Name	Subgroup	Distribution Status	Year Last Documented	Protection Status		Conservation Rank	
				State	Federal	State	Global
Allegheny Mountain Dusky Salamander <i>Desmognathus ochrophaeus</i>	Salamanders	Recently Confirmed	1990-1999	Game with no open season		S5	G5
American Toad <i>Bufo americanus</i>	Frogs and Toads	Recently Confirmed	1990-1999	Game with open season		S5	G5
Blue-spotted Salamander <i>Ambystoma laterale</i>	Salamanders	Recently Confirmed	1990-1999	Special Concern		S4	G5
Bullfrog <i>Rana catesbeiana</i>	Frogs and Toads	Recently Confirmed	1990-1999	Game with open season		S5	G5
Dusky Salamander <i>Desmognathus fuscus</i>	Salamanders	Recently Confirmed	1990-1999	Game with no open season		S5	G5
Eastern Newt <i>Notophthalmus viridescens</i>	Salamanders	Recently Confirmed	1990-1999	Game with no open season		S5	G5
Gray Treefrog <i>Hyla versicolor</i>	Frogs and Toads	Recently Confirmed	1990-1999	Game with open season		S5	G5
Green Frog <i>Rana clamitans</i>	Frogs and Toads	Recently Confirmed	1990-1999	Game with open season		S5	G5
Jefferson Salamander <i>Ambystoma jeffersonianum</i>	Salamanders	Recently Confirmed	1990-1999	Special Concern		S4	G4
Jefferson Salamander Complex <i>Ambystoma jeffersonianum x laterale</i>	Salamanders	Recently Confirmed	1990-1999	Game with no open season		SNA	GU
Mink Frog <i>Rana septentrionalis</i>	Frogs and Toads	Recently Confirmed	1990-1999	Game with open season		S5	G5
Mudpuppy <i>Necturus maculosus</i>	Salamanders	Recently Confirmed	1990-1999	Game with no open season		S4	G5
Northern Leopard Frog <i>Rana pipiens</i>	Frogs and Toads	Recently Confirmed	1990-1999	Game with open season		S5	G5
Northern Two-lined Salamander <i>Eurycea bislineata</i>	Salamanders	Recently Confirmed	1990-1999	Game with no open season		S5	G5
Pickereel Frog <i>Rana palustris</i>	Frogs and Toads	Recently Confirmed	1990-1999	Game with open season		S5	G5
Redback Salamander <i>Plethodon cinereus</i>	Salamanders	Recently Confirmed	1990-1999	Game with no open season		S5	G5

New York Nature Explorer

Common Name	Subgroup	Distribution Status	Year Last Documented	Protection Status		Conservation Rank	
				State	Federal	State	Global
Spotted Salamander <i>Ambystoma maculatum</i>	Salamanders	Recently Confirmed	1990-1999	Game with no open season		S5	G5
Spring Peeper <i>Pseudacris crucifer</i>	Frogs and Toads	Recently Confirmed	1990-1999	Game with open season		S5	G5
Spring Salamander <i>Gyrinophilus porphyriticus</i>	Salamanders	Recently Confirmed	1990-1999	Game with no open season		S5	G5
Western Chorus Frog <i>Pseudacris triseriata</i>	Frogs and Toads	Recently Confirmed	1990-1999	Game with open season		S4	G5
Wood Frog <i>Rana sylvatica</i>	Frogs and Toads	Recently Confirmed	1990-1999	Game with open season		S5	G5
Animal: Fish							
Blackchin Shiner <i>Notropis heterodon</i>	Minnows, Shiners, Suckers	Recently Confirmed	2003			S1	G5
Channel Darter <i>Percina copelandi</i>	Darters and Sunfishes	Recently Confirmed	2000			S2	G4
Eastern Sand Darter <i>Ammocrypta pellucida</i>	Darters and Sunfishes	Recently Confirmed	2009	Threatened		S2	G4
Greater Redhorse <i>Moxostoma valenciennesi</i>	Minnows, Shiners, Suckers	Recently Confirmed	2003			S2	G4
Iowa Darter <i>Etheostoma exile</i>	Darters and Sunfishes	Recently Confirmed	2004			S2	G5
Lake Sturgeon <i>Acipenser fulvescens</i>	Sturgeons and Paddlefish	Recently Confirmed	2000	Threatened		S1S2	G3G4
Mooneye <i>Hiodon tergisus</i>	Mooneyes	Recently Confirmed	2001	Threatened		S1	G5
Northern Brook Lamprey <i>Ichthyomyzon fossor</i>	Lampreys	Recently Confirmed	2003			S1	G4
Pugnose Shiner <i>Notropis anogenus</i>	Minnows, Shiners, Suckers	Recently Confirmed	2004	Endangered		S1	G3
Quillback <i>Carpoides cyprinus</i>	Minnows, Shiners, Suckers	Possible but not Confirmed				S2	G5

New York Nature Explorer

Common Name	Subgroup	Distribution Status	Year Last Documented	Protection Status		Conservation Rank	
				State	Federal	State	Global

Round Whitefish	Salmon and Trout	Recently Confirmed	2005	Endangered		S1S2	G5
-----------------	------------------	--------------------	------	------------	--	------	----

Prosopium cylindraceum

Sauger	Darters and Sunfishes	Recently Confirmed				S1	G5
--------	-----------------------	--------------------	--	--	--	----	----

Sander canadensis

Animal: Butterflies and Moths

Jutta Arctic	Butterflies and Skippers	Recently Confirmed	2005			S1	G5
--------------	--------------------------	--------------------	------	--	--	----	----

Oeneis jutta

Animal: Dragonflies and Damselflies

Brook Snaketail	Dragonflies	Recently Confirmed	2010			S2	G4
-----------------	-------------	--------------------	------	--	--	----	----

Ophiogomphus aspersus

Extra-striped Snaketail	Dragonflies	Recently Confirmed	2007	Special Concern		S1	G4
-------------------------	-------------	--------------------	------	-----------------	--	----	----

Ophiogomphus anomalus

Forcipate Emerald	Dragonflies	Recently Confirmed	2009			S1	G5
-------------------	-------------	--------------------	------	--	--	----	----

Somatochlora forcipata

Incurvate Emerald	Dragonflies	Recently Confirmed	2005			S1	G4
-------------------	-------------	--------------------	------	--	--	----	----

Somatochlora incurvata

Kennedy's Emerald	Dragonflies	Recently Confirmed				SNA	G5
-------------------	-------------	--------------------	--	--	--	-----	----

Somatochlora kennedyi

Lake Emerald	Dragonflies	Recently Confirmed	1994			S1	G5
--------------	-------------	--------------------	------	--	--	----	----

Somatochlora cingulata

Mottled Damer	Dragonflies	Recently Confirmed				S2S3	G4
---------------	-------------	--------------------	--	--	--	------	----

Aeshna clepsydra

Ocellated Emerald	Dragonflies	Recently Confirmed	2004			S2S3	G5
-------------------	-------------	--------------------	------	--	--	------	----

Somatochlora minor

Rapids Clubtail	Dragonflies	Recently Confirmed	2007			S1S2	G3G4
-----------------	-------------	--------------------	------	--	--	------	------

Gomphus quadricolor

Skillet Clubtail	Dragonflies	Recently Confirmed	2007			S1	G3
------------------	-------------	--------------------	------	--	--	----	----

Gomphus ventricosus

Animal: Mussels and Clams

Black Sandshell	Freshwater Mussels	Recently Confirmed	1995			S2S3	G5
-----------------	--------------------	--------------------	------	--	--	------	----

Ligumia recta

New York Nature Explorer

Common Name	Subgroup	Distribution Status	Year Last Documented	Protection Status		Conservation Rank	
				State	Federal	State	Global

Yellow Lampmussel	Freshwater Mussels	Recently Confirmed	2000			S3	G3G4
<i>Lampsilis cariosa</i>							

Animal: Animal Assemblages

Bat Colony	Animal Assemblages	Recently Confirmed	1986			SNR	GNR
<i>Bat Colony</i>							

Gull Colony	Animal Assemblages	Recently Confirmed	1982			SNR	GNR
<i>Gull Colony</i>							

Waterfowl Winter Concentration Area	Animal Assemblages	Recently Confirmed	1992			S3S4	GNR
<i>Waterfowl Winter Concentration Area</i>							

Plant: Flowering Plants

Algae-like Pondweed	Other Flowering Plants	Historically Confirmed		Threatened		S3	G4
<i>Potamogeton confervoides</i>							

Alpine Willow-herb	Other Flowering Plants	Recently Confirmed	2003	Endangered		S1	G5T5
<i>Epilobium hornemannii</i> ssp. <i>hornemannii</i>							

American Bittersweet	Other Flowering Plants	Recently Confirmed				S3	G5
<i>Celastrus scandens</i>							

American Dragonhead	Other Flowering Plants	Historically Confirmed	1889	Endangered		S1	G5
<i>Dracocephalum parviflorum</i>							

American Phragmites	Grasses	Recently Confirmed				S3	G5T4
<i>Phragmites australis</i> ssp. <i>americanus</i>							

Autumnal Water-starwort	Other Flowering Plants	Recently Confirmed	2004	Endangered		S1	G5
<i>Callitriche hermaphroditica</i>							

Awned Sedge	Sedges	Recently Confirmed	2005	Endangered		S3	G5
<i>Carex atherodes</i>							

Back's Sedge	Sedges	Recently Confirmed	2007	Threatened		S2	G4
<i>Carex backii</i>							

Balsam Willow	Other Flowering Plants	Recently Confirmed	2002	Threatened		S3	G5
<i>Salix pyrifolia</i>							

Bog Aster	Asters, Goldenrods and Daisies	Recently Confirmed				S3	G5
<i>Oclemena nemoralis</i>							

New York Nature Explorer

Common Name	Subgroup	Distribution Status	Year Last Documented	Protection Status		Conservation Rank	
				State	Federal	State	Global
Bristly Nodding Sedge <i>Carex echinoides</i>	Sedges	Recently Confirmed				S1	G5
Brown Bog Sedge <i>Carex buxbaumii</i>	Sedges	Recently Confirmed	2008	Threatened		S2	G5
Buttemut <i>Juglans cinerea</i>	Other Flowering Plants	Historically Confirmed				S4	G4
Calypso <i>Calypso bulbosa</i> var. <i>americana</i>	Orchids	Historically Confirmed	1929	Endangered		SH	G5T5?
Canada Ricegrass <i>Piptatherum canadense</i>	Grasses	Recently Confirmed	1994	Endangered		S2	G5
Carey's Sedge <i>Carex careyana</i>	Sedges	Recently Confirmed	2004			S1S2	G4G5
Clinton's Clubrush <i>Trichophorum clintonii</i>	Sedges	Historically Confirmed	1836	Endangered		S1	G4
Common Mare's-tail <i>Hippuris vulgaris</i>	Other Flowering Plants	Historically Confirmed	1930	Endangered		S1	G5
Cork Elm <i>Ulmus thomasii</i>	Other Flowering Plants	Recently Confirmed	2007	Threatened		S2S3	G5
Crawe's Sedge <i>Carex crawei</i>	Sedges	Recently Confirmed	2006	Threatened		S2	G5
Creamy Wild-pea <i>Lathyrus ochroleucus</i>	Other Flowering Plants	Historically Confirmed				S3	G4G5
Creeping Sedge <i>Carex chordeorrhiza</i>	Sedges	Historically Confirmed		Threatened		S2	G5
Douglas' Knotweed <i>Polygonum douglasii</i>	Other Flowering Plants	Historically Confirmed		Threatened		S2	G5
Downy Lettuce <i>Lactuca hirsuta</i>	Asters, Goldenrods and Daisies	Recently Confirmed	2007	Endangered		S1	G5?
Downy Phlox <i>Phlox pilosa</i> ssp. <i>pilosa</i>	Other Flowering Plants	Historically Confirmed	1910	Endangered		SH	G5T5
Drummond's Rock-cress <i>Boechera stricta</i>	Other Flowering Plants	Recently Confirmed	2003	Endangered		S2	G5

New York Nature Explorer

Common Name	Subgroup	Distribution Status	Year Last Documented	Protection Status		Conservation Rank	
				State	Federal	State	Global
Dwarf White Birch <i>Betula minor</i>	Other Flowering Plants	Possible but not Confirmed		Endangered		S1	G4Q
Emmons' Sedge <i>Carex albicans var. emmonsi</i>	Sedges	Recently Confirmed				S3	G5T5
Emory's Sedge <i>Carex emoryi</i>	Sedges	Recently Confirmed	2008	Endangered		S1S2	G5
Erect Knotweed <i>Polygonum erectum</i>	Other Flowering Plants	Historically Confirmed		Endangered		S2S3	G5
False-pennyroyal <i>Trichostema brachiatum</i>	Other Flowering Plants	Recently Confirmed				S3	G5
Farwell's Water-milfoil <i>Myriophyllum farwellii</i>	Other Flowering Plants	Recently Confirmed	2006	Threatened		S2	G5
Fernald's Sedge <i>Carex merritt-feraldii</i>	Sedges	Recently Confirmed	2006	Threatened		S2S3	G5
Few-seed Sedge <i>Carex oligosperma</i>	Sedges	Recently Confirmed				S3	G5?
Five-angled Field-dodder <i>Cuscuta pentagona</i>	Other Flowering Plants	Possible but not Confirmed				S3	G4G5
Great St. John's-wort <i>Hypericum ascyron</i>	Other Flowering Plants	Recently Confirmed				S3	G4
Handsome Sedge <i>Carex formosa</i>	Sedges	Recently Confirmed	2004	Threatened		S2	G4
Heart Sorrel <i>Rumex hastatulus</i>	Other Flowering Plants	Historically Confirmed		Endangered		SH	G5
Hiddenfruit Bladderwort <i>Utricularia geminiscapa</i>	Other Flowering Plants	Recently Confirmed				S3	G4G5
Hill's Pondweed <i>Potamogeton hillii</i>	Other Flowering Plants	Recently Confirmed	2004	Threatened		S2	G3
Hooker's Orchid <i>Platanthera hookeri</i>	Orchids	Historically Confirmed		Endangered		S1	G4
Lake-cress <i>Rorippa aquatica</i>	Other Flowering Plants	Recently Confirmed	1997	Threatened		S2	G4?

New York Nature Explorer

Common Name	Subgroup	Distribution Status	Year Last Documented	Protection Status		Conservation Rank	
				State	Federal	State	Global
Lesser Bladderwort <i>Utricularia minor</i>	Other Flowering Plants	Recently Confirmed		Threatened		S3	G5
Lesser Fringed Gentian <i>Gentianopsis virgata</i>	Other Flowering Plants	Recently Confirmed	2002	Endangered		S1	G5
Indley's Aster <i>Symphotrichum ciliolatum</i>	Asters, Goldenrods and Daisies	Recently Confirmed	2005	Endangered		S1	G5
Many-head Sedge <i>Carex sychnocephala</i>	Sedges	Extirpated	1935	Endangered		SH	G4
Michaux's Blue-eyed-grass <i>Sisyrinchium mucronatum</i>	Other Flowering Plants	Recently Confirmed	1991	Endangered		S1	G5
Mock-pennyroyal <i>Hedeoma hispida</i>	Other Flowering Plants	Historically Confirmed	1915	Threatened		S2S3	G5
Mountain Death Camas <i>Anticlea elegans ssp. glaucus</i>	Other Flowering Plants	Recently Confirmed	2002	Threatened		S2	G5T4T5
Neckweed <i>Veronica peregrina ssp. xalapensis</i>	Other Flowering Plants	Recently Confirmed				S3	G5T5
New England Northern Reedgrass <i>Calamagrostis stricta ssp. inexpansa</i>	Grasses	Recently Confirmed	2004	Threatened		S2	G5T5
Northeastern Sedge <i>Carex cryptolepis</i>	Sedges	Recently Confirmed				S3	G4
Northern Bog Aster <i>Symphotrichum boreale</i>	Asters, Goldenrods and Daisies	Recently Confirmed	2007	Threatened		S2	G5
Northern Bog Sedge <i>Carex gynocrates</i>	Sedges	Recently Confirmed	2005	Endangered		S1	G5
Northern Bog Violet <i>Viola nephtrophylla</i>	Other Flowering Plants	Recently Confirmed	2006	Endangered		S1	G5
Northern Clustered Sedge <i>Carex arcta</i>	Sedges	Possible but not Confirmed		Endangered		S1	G5
Northern False Foxglove <i>Agalinis paupercula var. borealis</i>	Other Flowering Plants	Recently Confirmed		Threatened		S3	G5T4?
Northern Pondweed <i>Potamogeton alpinus</i>	Other Flowering Plants	Recently Confirmed	2001	Threatened		S2	G5

New York Nature Explorer

Common Name	Subgroup	Distribution Status	Year Last Documented	Protection Status		Conservation Rank	
				State	Federal	State	Global
Ontario Aster <i>Symphotrichum ontarionis</i>	Asters, Goldenrods and Daisies	Recently Confirmed				S3	G5
Ovate Spikerush <i>Eleocharis ovata</i>	Sedges	Historically Confirmed		Endangered		S1S2	G5
Pickering's Reedgrass <i>Calamagrostis pickeringii</i>	Grasses	Recently Confirmed				S3	G4
Pink Wintergreen <i>Pyrola asarifolia ssp. asarifolia</i>	Other Flowering Plants	Recently Confirmed	2007	Threatened		S2	G5T5
Pod Grass <i>Scheuchzeria palustris</i>	Other Flowering Plants	Recently Confirmed	1994	Rare		S3	G5
Prickly Hornwort <i>Ceratophyllum echinatum</i>	Other Flowering Plants	Recently Confirmed		Threatened		S3	G4?
Primrose-leaf Violet <i>Viola primulifolia</i>	Other Flowering Plants	Historically Confirmed		Threatened		S2	G5
Purple Rock-cress <i>Boechera grahamii</i>	Other Flowering Plants	Recently Confirmed	2006	Rare		S2	G5
Red Pigweed <i>Chenopodium rubrum</i>	Other Flowering Plants	Possible but not Confirmed		Threatened		S2	G5
Rhodora <i>Rhododendron canadense</i>	Other Flowering Plants	Recently Confirmed	2007	Threatened		S2	G5
Riverweed <i>Podostemum ceratophyllum</i>	Other Flowering Plants	Recently Confirmed	2005	Threatened		S2	G5
Robbins Spikerush <i>Eleocharis robbinsii</i>	Sedges	Recently Confirmed				S3	G4G5
Rock-cress <i>Draba arabisans</i>	Other Flowering Plants	Historically Confirmed	1940	Threatened		S2	G4
Rough Avens <i>Geum virginianum</i>	Other Flowering Plants	Historically Confirmed		Endangered		S2	G5
Rusty Flatsedge <i>Cyperus odoratus</i>	Sedges	Recently Confirmed				S3	G5
Sartwell's Sedge <i>Carex sartwellii</i>	Sedges	Recently Confirmed	2005	Threatened		S1S2	G4G5

New York Nature Explorer

Common Name	Subgroup	Distribution Status	Year Last Documented	Protection Status		Conservation Rank	
				State	Federal	State	Global
Scarlet Indian-paintbrush <i>Castilleja coccinea</i>	Other Flowering Plants	Recently Confirmed	2007	Endangered		S1	G5
Schweinitz's Flatsedge <i>Cyperus schweinitzii</i>	Sedges	Recently Confirmed	2005	Rare		S3	G5
Sheathed Pondweed <i>Stuckenia filiformis</i> ssp. <i>occidentalis</i>	Other Flowering Plants	Historically Confirmed	1930	Endangered		S1	G5T5
Slender Bulrush <i>Schoenoplectus heterochaetus</i>	Sedges	Recently Confirmed	2006	Endangered		S1	G5
Slender Pondweed <i>Stuckenia filiformis</i> ssp. <i>alpina</i>	Other Flowering Plants	Historically Confirmed	1930	Endangered		S1	G5T5
Small Bur-reed <i>Sparganium natans</i>	Other Flowering Plants	Recently Confirmed	2006	Threatened		S2	G5
Small Skullcap <i>Scutellaria parvula</i> var. <i>parvula</i>	Other Flowering Plants	Recently Confirmed				S3	G4T4
Small Yellow Ladyslipper <i>Cypripedium parviflorum</i> var. <i>parviflorum</i>	Orchids	Historically Confirmed		Endangered		SH	G5T3T5
Small's Knotweed <i>Polygonum aviculare</i> ssp. <i>buxiforme</i>	Other Flowering Plants	Recently Confirmed	2007	Endangered		S1	G5T5
Sooty Beakrush <i>Rhynchospora fusca</i>	Sedges	Recently Confirmed				S3S4	G4G5
Southern Twayblade <i>Listera australis</i>	Orchids	Historically Confirmed	1909	Endangered		S1S2	G4
Southern Yellow Flax <i>Linum medium</i> var. <i>texanum</i>	Other Flowering Plants	Recently Confirmed	2004	Threatened		S2	G5T5
Sparse-flowered Sedge <i>Carex tenuiflora</i>	Sedges	Recently Confirmed	2007	Endangered		S1	G5
Stiff Yellow Flax <i>Linum striatum</i>	Other Flowering Plants	Recently Confirmed		Rare		S3	G5
Straight-leaf Pondweed <i>Potamogeton strictifolius</i>	Other Flowering Plants	Recently Confirmed	2005	Endangered		S1	G5
Swamp Aster <i>Eurybia radula</i>	Asters, Goldenrods and Daisies	Historically Confirmed	1915	Endangered		SH	G5

New York Nature Explorer

Common Name	Subgroup	Distribution Status	Year Last Documented	Protection Status		Conservation Rank	
				State	Federal	State	Global
Swamp Birch <i>Betula pumila</i>	Other Flowering Plants	Recently Confirmed	2005	Threatened		S2	G5
Swamp Buttercup <i>Ranunculus hispidus</i> var. <i>nitidus</i>	Other Flowering Plants	Historically Confirmed		Endangered		S1	G5T5
Sweet Coltsfoot <i>Petasites frigidus</i> var. <i>palmatus</i>	Asters, Goldenrods and Daisies	Historically Confirmed		Endangered		S1	G5T5
Tall White Aster <i>Symphoricaricium lanceolatum</i> var. <i>interior</i>	Asters, Goldenrods and Daisies	Historically Confirmed		Endangered		SH	G5T5
Troublesome Sedge <i>Carex molesta</i>	Sedges	Recently Confirmed		Threatened		S2S3	G4
Upland Goldenrod <i>Oligoneuron album</i>	Asters, Goldenrods and Daisies	Recently Confirmed				S3	G5
Water Milfoil <i>Myriophyllum alterniflorum</i>	Other Flowering Plants	Historically Confirmed		Threatened		S2	G5
Water-marigold <i>Bidens beckii</i>	Asters, Goldenrods and Daisies	Recently Confirmed		Threatened		S3	G4G5
Water-plantain <i>Alisma gramineum</i>	Other Flowering Plants	Recently Confirmed	2007			S2S3	G5
Whorled Mountain-mint <i>Pycnanthemum verticillatum</i> var. <i>verticillatum</i>	Other Flowering Plants	Recently Confirmed	2005	Threatened		S1S2	G5T5
Wiry Panic Grass <i>Panicum flexile</i>	Grasses	Recently Confirmed	2005	Threatened		S3	G5
Yellow Giant-hyssop <i>Agastache nepetoides</i>	Other Flowering Plants	Recently Confirmed		Threatened		S2S3	G5

Plant: Conifers

Jack Pine <i>Pinus banksiana</i>	Conifers	Historically Confirmed		Rare		S3	G5
-------------------------------------	----------	------------------------	--	------	--	----	----

Plant: Ferns and Fern Allies

Blunt-lobed Grape Fern <i>Botrychium oneidense</i>	Ferns	Historically Confirmed		Endangered		S2S3	G4
Fir Clubmoss <i>Huperzia selago</i>	Clubmosses	Recently Confirmed	1915	Endangered		S1	G5

New York Nature Explorer

Common Name	Subgroup	Distribution Status	Year Last Documented	Protection Status		Conservation Rank	
				State	Federal	State	Global
Hidden Spike-moss <i>Selaginella eclipses</i>	Quillworts	Recently Confirmed				S1	G4
Large-spored Quillwort <i>Isoetes lacustris</i>	Quillworts	Recently Confirmed		Rare		S3	G5
Marsh Horsetail <i>Equisetum palustre</i>	Horsetails	Recently Confirmed	1995	Threatened		S2	G5
Meadow Horsetail <i>Equisetum pratense</i>	Horsetails	Recently Confirmed	2007	Threatened		S2	G5
Northern Bristly Club-moss <i>Spinulum canadense</i>	Clubmosses	Historically Confirmed				S1S2	G4G5
Northern Running-pine <i>Diplazium complanatum</i>	Clubmosses	Recently Confirmed	2006	Endangered		S1	G5
Riverbank Quillwort <i>Isoetes riparia</i>	Quillworts	Historically Confirmed	1922	Endangered		S1	G5?
Rugulose Grape Fern <i>Botrychium rugulosum</i>	Ferns	Recently Confirmed	1996	Endangered		S1	G3
Sitka Clubmoss <i>Diplazium sitchense</i>	Clubmosses	Possible but not Confirmed		Endangered		S1	G5
Smooth Cliff Brake <i>Pellaea glabella ssp. glabella</i>	Ferns	Recently Confirmed	2007	Threatened		S2	G5T5

Plant: Mosses

Ampulla dung moss <i>Splachnum ampullaceum</i>	Other Mosses	Recently Confirmed	2002			S2	G5
---	--------------	--------------------	------	--	--	----	----

Natural Community: Uplands

Beech-Maple Mesic Forest <i>Beech-maple mesic forest</i>	Forested Uplands	Recently Confirmed	2002			S4	G4
Boreal Heath Barrens <i>Boreal heath barrens</i>	Barrens and Woodlands	Recently Confirmed	2002			S1	G3G4
Calcareous Pavement Barrens <i>Calcareous pavement barrens</i>	Barrens and Woodlands	Recently Confirmed	1995			S1S2	G3

New York Nature Explorer

Common Name	Subgroup	Distribution Status	Year Last Documented	Protection Status		Conservation Rank	
				State	Federal	State	Global
Hemlock-Northern Hardwood Forest <i>Hemlock-northern hardwood forest</i>	Forested Uplands	Recently Confirmed	1990			S4	G4G5
Maple-Basswood Rich Mesic Forest <i>Maple-basswood rich mesic forest</i>	Forested Uplands	Recently Confirmed	2008			S3	G4
Pine-Northern Hardwood Forest <i>Pine-northern hardwood forest</i>	Forested Uplands	Recently Confirmed	2007			S4	G4
Riverside Ice Meadow <i>Riverside ice meadow</i>	Open Uplands	Recently Confirmed	1986			S1	G2G3
Sandstone Pavement Barrens <i>Sandstone pavement barrens</i>	Barrens and Woodlands	Recently Confirmed	2007			S1	G2
Spruce Flats <i>Spruce flats</i>	Forested Uplands	Recently Confirmed	1997			S4	G4?
Spruce-Northern Hardwood Forest <i>Spruce-northern hardwood forest</i>	Forested Uplands	Recently Confirmed	2002			S3S4	G3G4
Successional Old Field <i>Successional old field</i>	Open Uplands	Recently Confirmed	1997			S5	G5
Successional Shrubland <i>Successional shrubland</i>	Open Uplands	Recently Confirmed	1997			S5	G5
Natural Community: Freshwater Nontidal Wetlands							
Black Spruce-Tamarack Bog <i>Black spruce-tamarack bog</i>	Forested Peatlands	Recently Confirmed	2003			S3	G4G5
Cobble Shore Wet Meadow <i>Cobble shore wet meadow</i>	Open Mineral Soil Wetlands	Recently Confirmed	2002			S2	G3?
Deep Emergent Marsh <i>Deep emergent marsh</i>	Open Mineral Soil Wetlands	Recently Confirmed	2007			S5	G5
Dwarf Shrub Bog <i>Dwarf shrub bog</i>	Open Peatlands	Recently Confirmed	2003			S3	G4
Inland Poor Fen <i>Inland poor fen</i>	Open Peatlands	Recently Confirmed	2002			S3	G4
Northern White Cedar Swamp <i>Northern white cedar swamp</i>	Forested Peatlands	Recently Confirmed	2001			S2S3	G4

New York Nature Explorer

Common Name	Subgroup	Distribution Status	Year Last Documented	Protection Status		Conservation Rank	
				State	Federal	State	Global
Red Maple-Hardwood Swamp <i>Red maple-hardwood swamp</i>	Forested Mineral Soil Wetlands	Recently Confirmed	1995			S4S5	G5
Red Maple-Tamarack Peat Swamp <i>Red maple-tamarack peat swamp</i>	Forested Peatlands	Recently Confirmed	1997			S2S3	G3G4
Rich Graminoid Fen <i>Rich graminoid fen</i>	Open Peatlands	Recently Confirmed	1997			S1S2	G3
Rich Shrub Fen <i>Rich shrub fen</i>	Open Peatlands	Recently Confirmed	2001			S1S2	G3G4
Sedge Meadow <i>Sedge meadow</i>	Open Peatlands	Recently Confirmed	2002			S4	G5
Shallow Emergent Marsh <i>Shallow emergent marsh</i>	Open Mineral Soil Wetlands	Recently Confirmed	1996			S5	G5
Shrub Swamp <i>Shrub swamp</i>	Open Mineral Soil Wetlands	Recently Confirmed	2007			S5	G5
Silver Maple-Ash Swamp <i>Silver maple-ash swamp</i>	Forested Mineral Soil Wetlands	Recently Confirmed	2007			S3	G4
Sinkhole Wetland <i>Sinkhole wetland</i>	Open Mineral Soil Wetlands	Recently Confirmed	1997			S1	G3?
Spruce-Fir Swamp <i>Spruce-fir swamp</i>	Forested Mineral Soil Wetlands	Recently Confirmed	2002			S3	G3G4

Natural Community: Lakes and Ponds

Eutrophic Dimictic Lake <i>Eutrophic dimictic lake</i>	Natural Lakes and Ponds	Recently Confirmed	1997			S3S4	G4
Great Lakes Aquatic Bed <i>Great Lakes aquatic bed</i>	Natural Lakes and Ponds	Recently Confirmed	1996			S3	G4
Great Lakes Deepwater Community <i>Great Lakes deepwater community</i>	Natural Lakes and Ponds	Recently Confirmed	1996			S1S2	G2G3
Great Lakes Exposed Shoal <i>Great Lakes exposed shoal</i>	Natural Lakes and Ponds	Recently Confirmed	1996			S4	G4
Oligotrophic Pond <i>Oligotrophic pond</i>	Natural Lakes and Ponds	Recently Confirmed	2000			S4	G4

New York Nature Explorer

Common Name	Subgroup	Distribution Status	Year Last Documented	Protection Status		Conservation Rank	
				State	Federal	State	Global
Winter-stratified Monomictic Lake <i>Winter-stratified monomictic lake</i>	Natural Lakes and Ponds	Recently Confirmed	1996			S2	G3G4

Natural Community: Rivers and Streams

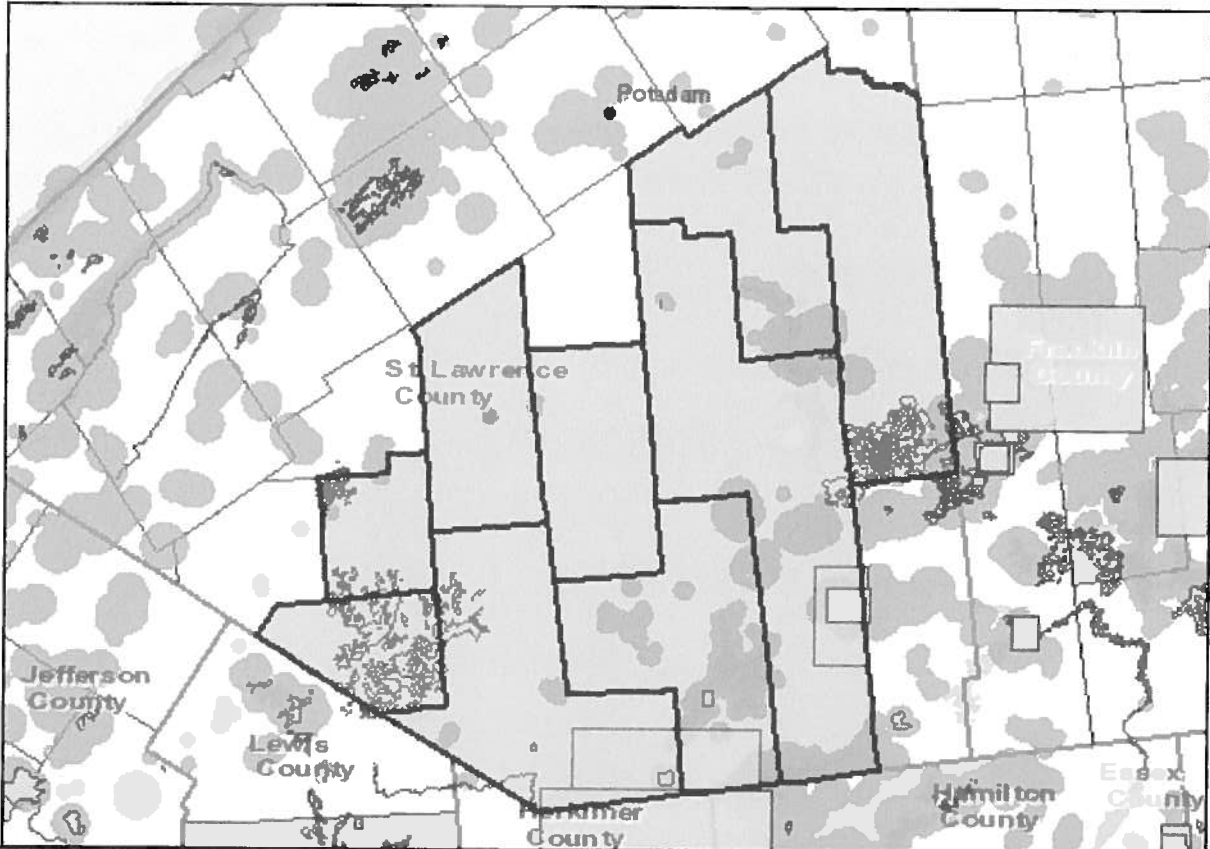
Confined River <i>Confined river</i>	Natural Rivers and Streams	Recently Confirmed	1996			S3S4	G4
Marsh Headwater Stream <i>Marsh headwater stream</i>	Natural Rivers and Streams	Recently Confirmed	1996			S4	G4

This list only includes records from the databases of the NY Natural Heritage Program, the second NYS Breeding Bird Atlas Project, and the NY Amphibian and Reptile Atlas Project. This list is not a definitive statement about the presence or absence of all plants and animals, including rare or state-listed species, or of all significant natural communities.

New York Nature Explorer

Town Results Report

Criteria: Town: Clare, Clifton, Colton, Edwards, Fine, Hopkinton, Parishville, Pitcairn, Russell



Common Name	Subgroup	Distribution Status	Year Last Documented	Protection Status		Conservation Rank	
				State	Federal	State	Global
Town: Clare							
Plant: Flowering Plants							

Drummond's Rock-cress	Other Flowering Plants	Recently Confirmed	2003	Endangered		S2	G5
<i>Boechera stricta</i>							

Town: Clifton

Animal: Birds

Common Loon	Loons	Recently Confirmed	2004	Special Concern		S4	G5
<i>Gavia immer</i>							

New York Nature Explorer

Common Name	Subgroup	Distribution Status	Year Last Documented	Protection Status		Conservation Rank	
				State	Federal	State	Global

Plant: Flowering Plants

New England Northern Reedgrass <i>Calamagrostis stricta ssp. inexpansa</i>	Grasses	Recently Confirmed	2004	Threatened		S2	G5T5
Swamp Aster <i>Eurybia radula</i>	Asters, Goldenrods and Daisies	Historically Confirmed	1915	Endangered		SH	G5

Natural Community: Uplands

Beech-Maple Mesic Forest <i>Beech-maple mesic forest</i>	Forested Uplands	Recently Confirmed	1991			S4	G4
Hemlock-Northern Hardwood Forest <i>Hemlock-northern hardwood forest</i>	Forested Uplands	Recently Confirmed	1990			S4	G4G5
Pine-Northern Hardwood Forest <i>Pine-northern hardwood forest</i>	Forested Uplands	Recently Confirmed	1990			S4	G4
Spruce Flats <i>Spruce flats</i>	Forested Uplands	Recently Confirmed	1997			S4	G4?
Spruce-Northern Hardwood Forest <i>Spruce-northern hardwood forest</i>	Forested Uplands	Recently Confirmed	1997			S3S4	G3G4

Natural Community: Rivers and Streams

Marsh Headwater Stream <i>Marsh headwater stream</i>	Natural Rivers and Streams	Recently Confirmed	1996			S4	G4
---	----------------------------	--------------------	------	--	--	----	----

Town: Colton

Animal: Birds

Common Loon <i>Gavia immer</i>	Loons	Recently Confirmed	2008	Special Concern		S4	G5
Rusty Blackbird <i>Euphagus carolinus</i>	Blackbirds and Orioles	Recently Confirmed	2010	Protected Bird		S2	G4

Animal: Butterflies and Moths

Jutta Arctic <i>Oeneis jutta</i>	Butterflies and Skippers	Recently Confirmed	2005			S1	G5
-------------------------------------	--------------------------	--------------------	------	--	--	----	----

New York Nature Explorer

Common Name	Subgroup	Distribution Status	Year Last Documented	Protection Status		Conservation Rank	
				State	Federal	State	Global

Animal: Dragonflies and Damselflies

Extra-striped Snaketail <i>Ophiogomphus anomalus</i>	Dragonflies	Recently Confirmed	2003	Special Concern		S1	G4
Forcipate Emerald <i>Somatochlora forcipata</i>	Dragonflies	Recently Confirmed	1995			S1	G5
Incurvate Emerald <i>Somatochlora incurvata</i>	Dragonflies	Recently Confirmed	2004			S1	G4
Lake Emerald <i>Somatochlora cingulata</i>	Dragonflies	Recently Confirmed	1994			S1	G5
Ocellated Emerald <i>Somatochlora minor</i>	Dragonflies	Recently Confirmed	2004			S2S3	G5

Plant: Flowering Plants

Balsam Willow <i>Salix pyrifolia</i>	Other Flowering Plants	Recently Confirmed	2002	Threatened		S3	G5
Northern Pondweed <i>Potamogeton alpinus</i>	Other Flowering Plants	Recently Confirmed	2001	Threatened		S2	G5
Pod Grass <i>Scheuchzeria palustris</i>	Other Flowering Plants	Recently Confirmed	1994	Rare		S3	G5
Swamp Aster <i>Eurybia radula</i>	Asters, Goldenrods and Daisies	Historically Confirmed	1915	Endangered		SH	G5

Plant: Ferns and Fern Allies

Fir Clubmoss <i>Huperzia selago</i>	Clubmosses	Historically Confirmed		Endangered		S1	G5
--	------------	------------------------	--	------------	--	----	----

Plant: Mosses

Ampulla dung moss <i>Splachnum ampullaceum</i>	Other Mosses	Recently Confirmed	2000			S2	G5
---	--------------	--------------------	------	--	--	----	----

Natural Community: Uplands

Beech-Maple Mesic Forest <i>Beech-maple mesic forest</i>	Forested Uplands	Recently Confirmed	2002			S4	G4
---	------------------	--------------------	------	--	--	----	----

New York Nature Explorer

Common Name	Subgroup	Distribution Status	Year Last Documented	Protection Status		Conservation Rank	
				State	Federal	State	Global

Natural Community: Freshwater Nontidal Wetlands

Black Spruce-Tamarack Bog <i>Black spruce-tamarack bog</i>	Forested Peatlands	Recently Confirmed	1997			S3	G4G5
Dwarf Shrub Bog <i>Dwarf shrub bog</i>	Open Peatlands	Recently Confirmed	2000			S3	G4
Inland Poor Fen <i>Inland poor fen</i>	Open Peatlands	Recently Confirmed	1997			S3	G4
Northern White Cedar Swamp <i>Northern white cedar swamp</i>	Forested Peatlands	Recently Confirmed	2001			S2S3	G4
Shallow Emergent Marsh <i>Shallow emergent marsh</i>	Open Mineral Soil Wetlands	Recently Confirmed	1996			S5	G5
Shrub Swamp <i>Shrub swamp</i>	Open Mineral Soil Wetlands	Recently Confirmed	1996			S5	G5
Spruce-Fir Swamp <i>Spruce-fir swamp</i>	Forested Mineral Soil Wetlands	Recently Confirmed	2002			S3	G3G4

Town: Edwards

Animal: Birds

Common Loon <i>Gavia immer</i>	Loons	Recently Confirmed	2003	Special Concern		S4	G5
-----------------------------------	-------	--------------------	------	-----------------	--	----	----

Plant: Flowering Plants

Calypso <i>Calypso bulbosa var. americana</i>	Orchids	Historically Confirmed	1929	Endangered		SH	G5T5?
Cork Elm <i>Ulmus thomasii</i>	Other Flowering Plants	Recently Confirmed	2007	Threatened		S2S3	G5

Natural Community: Uplands

Maple-Basswood Rich Mesic Forest <i>Maple-basswood rich mesic forest</i>	Forested Uplands	Recently Confirmed	2008			S3	G4
---	------------------	--------------------	------	--	--	----	----

New York Nature Explorer

Common Name	Subgroup	Distribution Status	Year Last Documented	Protection Status		Conservation Rank	
				State	Federal	State	Global
Pine-Northern Hardwood Forest <i>Pine-northern hardwood forest</i>	Forested Uplands	Recently Confirmed	2007			S4	G4

Town: Fine

Animal: Birds

Common Loon <i>Gavia immer</i>	Loons	Recently Confirmed	2004	Special Concern		S4	G5
-----------------------------------	-------	--------------------	------	-----------------	--	----	----

Plant: Flowering Plants

Canada Ricegrass <i>Piptatherum canadense</i>	Grasses	Recently Confirmed	1994	Endangered		S2	G5
Northern Bog Violet <i>Viola nephrophylla</i>	Other Flowering Plants	Possible but not Confirmed	1972	Endangered		S1	G5

Plant: Ferns and Fern Allies

Fir Clubmoss <i>Huperzia selago</i>	Clubmosses	Historically Confirmed	1915	Endangered		S1	G5
--	------------	------------------------	------	------------	--	----	----

Natural Community: Uplands

Beech-Maple Mesic Forest <i>Beech-maple mesic forest</i>	Forested Uplands	Recently Confirmed	1991			S4	G4
Boreal Heath Barrens <i>Boreal heath barrens</i>	Barrens and Woodlands	Recently Confirmed	1997			S1	G3G4
Hemlock-Northern Hardwood Forest <i>Hemlock-northern hardwood forest</i>	Forested Uplands	Recently Confirmed	1990			S4	G4G5
Maple-Basswood Rich Mesic Forest <i>Maple-basswood rich mesic forest</i>	Forested Uplands	Recently Confirmed	2008			S3	G4
Pine-Northern Hardwood Forest <i>Pine-northern hardwood forest</i>	Forested Uplands	Recently Confirmed	1990			S4	G4
Spruce Flats <i>Spruce flats</i>	Forested Uplands	Recently Confirmed	1997			S4	G4?

New York Nature Explorer

Common Name	Subgroup	Distribution Status	Year Last Documented	Protection Status		Conservation Rank	
				State	Federal	State	Global
Spruce-Northern Hardwood Forest <i>Spruce-northern hardwood forest</i>	Forested Uplands	Recently Confirmed	1997			S3S4	G3G4

Natural Community: Lakes and Ponds

Eutrophic Dimictic Lake <i>Eutrophic dimictic lake</i>	Natural Lakes and Ponds	Recently Confirmed	1997			S3S4	G4
---	-------------------------	--------------------	------	--	--	------	----

Natural Community: Rivers and Streams

Confined River <i>Confined river</i>	Natural Rivers and Streams	Recently Confirmed	1996			S3S4	G4
Marsh Headwater Stream <i>Marsh headwater stream</i>	Natural Rivers and Streams	Recently Confirmed	1996			S4	G4

Town: Hopkinton

Animal: Birds

Common Loon <i>Gavia immer</i>	Loons	Recently Confirmed	2002	Special Concern		S4	G5
-----------------------------------	-------	--------------------	------	-----------------	--	----	----

Animal: Dragonflies and Damselflies

Brook Snaketail <i>Ophiogomphus aspersus</i>	Dragonflies	Recently Confirmed	2002			S2	G4
---	-------------	--------------------	------	--	--	----	----

Plant: Flowering Plants

Farwell's Water-milfoil <i>Myriophyllum farwellii</i>	Other Flowering Plants	Recently Confirmed	2000	Threatened		S2	G5
--	------------------------	--------------------	------	------------	--	----	----

Plant: Mosses

Ampulla dung moss <i>Splachnum ampullaceum</i>	Other Mosses	Recently Confirmed	2002			S2	G5
---	--------------	--------------------	------	--	--	----	----

Natural Community: Uplands

Beech-Maple Mesic Forest <i>Beech-maple mesic forest</i>	Forested Uplands	Recently Confirmed	2002			S4	G4
---	------------------	--------------------	------	--	--	----	----

New York Nature Explorer

Common Name	Subgroup	Distribution Status	Year Last Documented	Protection Status		Conservation Rank	
				State	Federal	State	Global
Boreal Heath Barrens <i>Boreal heath barrens</i>	Barrens and Woodlands	Recently Confirmed	2002			S1	G3G4
Pine-Northern Hardwood Forest <i>Pine-northern hardwood forest</i>	Forested Uplands	Recently Confirmed	2002			S4	G4
Spruce-Northern Hardwood Forest <i>Spruce-northern hardwood forest</i>	Forested Uplands	Recently Confirmed	2002			S3S4	G3G4

Natural Community: Freshwater Nontidal Wetlands

Black Spruce-Tamarack Bog <i>Black spruce-tamarack bog</i>	Forested Peatlands	Recently Confirmed	2003			S3	G4G5
Dwarf Shrub Bog <i>Dwarf shrub bog</i>	Open Peatlands	Recently Confirmed	2002			S3	G4
Sedge Meadow <i>Sedge meadow</i>	Open Peatlands	Recently Confirmed	2002			S4	G5
Shrub Swamp <i>Shrub swamp</i>	Open Mineral Soil Wetlands	Recently Confirmed	2002			S5	G5
Spruce-Fir Swamp <i>Spruce-fir swamp</i>	Forested Mineral Soil Wetlands	Recently Confirmed	2002			S3	G3G4

Natural Community: Lakes and Ponds

Oligotrophic Pond <i>Oligotrophic pond</i>	Natural Lakes and Ponds	Recently Confirmed	2000			S4	G4
---	-------------------------	--------------------	------	--	--	----	----

Town: Parishville

Animal: Birds

Common Loon <i>Gavia immer</i>	Loons	Recently Confirmed	2004	Special Concern		S4	G5
-----------------------------------	-------	--------------------	------	-----------------	--	----	----

Plant: Flowering Plants

Farwell's Water-milfoil <i>Myriophyllum farwellii</i>	Other Flowering Plants	Recently Confirmed	2006	Threatened		S2	G5
Fernald's Sedge <i>Carex merritt-fernaldi</i>	Sedges	Recently Confirmed	2004	Threatened		S2S3	G5

New York Nature Explorer

Common Name	Subgroup	Distribution Status	Year Last Documented	Protection Status		Conservation Rank	
				State	Federal	State	Global
New England Northern Reedgrass <i>Calamagrostis stricta ssp. expansa</i>	Grasses	Recently Confirmed	2004	Threatened		S2	G5T5
Northern Bog Aster <i>Symphotrichum boreale</i>	Asters, Goldenrods and Daisies	Recently Confirmed	2006	Threatened		S2	G5
Schweinitz's Flatsedge <i>Cyperus schweinitzii</i>	Sedges	Recently Confirmed	2005	Rare		S3	G5

Natural Community: Freshwater Nontidal Wetlands

Spruce-Fir Swamp <i>Spruce-fir swamp</i>	Forested Mineral Soil Wetlands	Recently Confirmed	2000			S3	G3G4
---	--------------------------------	--------------------	------	--	--	----	------

Town: Pitcairn

Animal: Birds

Great Blue Heron <i>Ardea herodias</i>	Hérons, Bitterns, Egrets, Ibises	Historically Confirmed	1976	Protected Bird		S5	G5
---	----------------------------------	------------------------	------	----------------	--	----	----

Natural Community: Uplands

Maple-Basswood Rich Mesic Forest <i>Maple-basswood rich mesic forest</i>	Forested Uplands	Recently Confirmed	2008			S3	G4
---	------------------	--------------------	------	--	--	----	----

Town: Russell

Animal: Birds

Great Blue Heron <i>Ardea herodias</i>	Hérons, Bitterns, Egrets, Ibises	Historically Confirmed	1977	Protected Bird		S5	G5
---	----------------------------------	------------------------	------	----------------	--	----	----

Plant: Ferns and Fern Allies

Northern Running-pine <i>Diplazium complanatum</i>	Clubmosses	Recently Confirmed	2006	Endangered		S1	G5
---	------------	--------------------	------	------------	--	----	----

New York Nature Explorer

Common Name	Subgroup	Distribution Status	Year Last Documented	Protection Status		Conservation Rank	
				State	Federal	State	Global

Note: Restricted plants and animals may also have also been documented in one or more of these Towns or Cities, but are not listed in these results. This application does not provide information at the level of Town or City on state-listed animals and on other sensitive animals and plants. A list of the restricted animals and plants documented in the corresponding county (or counties) can be obtained via the County link(s) on the original Town Search Results page. Any individual plant or animal on this county's restricted list may or may not occur in this particular Town or City.

This list only includes records of rare species and significant natural communities from the databases of the NY Natural Heritage Program. This list is not a definitive statement about the presence or absence of all plants and animals, including rare or state-listed species, or of all significant natural communities. For most areas, comprehensive field surveys have not been conducted, and this list should not be considered a substitute for on-site surveys.